

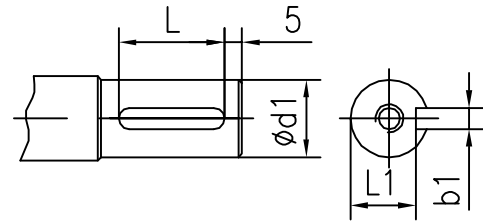
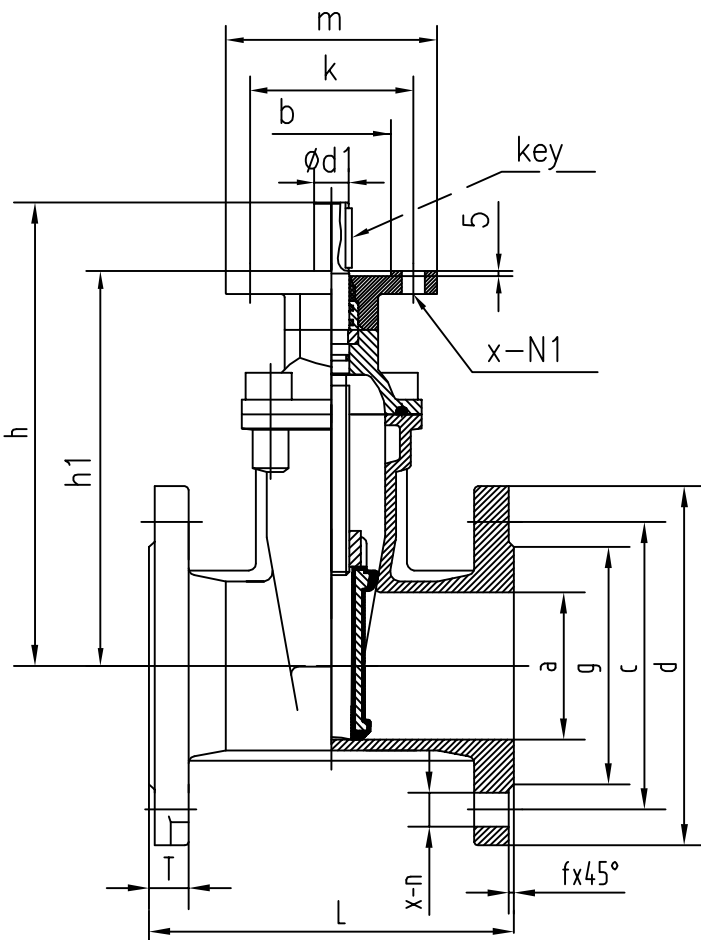
# Gate Valve DN40-DN300 Bare Shaft Top Flange DIN3352 F4

## SPECIFICATIONS

Size	DN 40 - 300
Class	PN 10 - PN 16
Design	DIN3352
Face to Face	DIN3202-F4
End Flange	BS EN 1092
Test	DIN3230
Working Temperature	NBR ≤80°C
	EPDM ≤120°C

## STANDARD MATERIALS OF MAIN PARTS

ITEM	PART NAME	MATERIAL
1	Body	Ductile Iron
2	Disc	Ductile Iron+NBR / EPDM
3	Bonnet	Ductile Iron
4	Stem	Stainless Steel 420
5	Stem Nut	Brass
6	Holding Ring	Brass
7	Sealing Ring	Brass
8	Top Flange	Ductile Iron
9	Bonnet Gasket	EPDM
10	O Ring	NBR
11	Dust Ring	NBR



DN	ød1	b1	L1	L
DN40-65	ø16	5	13	30
DN80-100	ø18	6	14.5	30
DN125-150	ø22	6	18.5	30
DN200-300	ø25	8	21	40

## DIMENSIONS AND WEIGHTS

DN	OUTLINE mm				END FLANGE DIN PN10/16 mm							Top flange					torque (N.M)	No. of turns open/close		
	L	h	D	h1	a	d	c	x-n	T	g	f	ISO FLG	ød1	b	k	m			x-n1	key
40	140	195	150	155	40	150	110	4-ø19	19	84	3	F10	16	70	102	125	4-ø12	5X5	40	6.0
50	150	215	150	175	50	165	125	4-ø19	19	99	3	F10	16	70	102	125	4-ø12	5X5	40	7.5
65	170	240	150	200	65	185	145	4-ø19	19	118	3	F10	16	70	102	125	4-ø12	5X5	40	9.5
80	180	265	180	225	80	200	160	8-ø19	19	132	3	F10	18	70	102	125	4-ø12	6X6	60	11.0
100	190	300	205	260	100	220	180	8-ø19	19	156	3	F10	18	70	102	125	4-ø12	6X6	75	14.0
125	200	360	205	320	125	250	210	8-ø19	19	184	3	F10	22	70	102	125	4-ø12	6x6	95	14.0
150	210	400	240	360	150	285	240	8-ø23	19	211	3	F10	22	70	102	125	4-ø12	6x6	110	16.5
200	230	500	280	450	200	340	295	8-ø23 12-ø23	20	266	3	F14	25	100	140	175	4-ø18	8x7	160	21.5
250	250	590	320	540	250	405	350 355	12-ø23 12-ø28	22	319	3	F14	25	100	140	175	4-ø18	8x7	210	22.5
300	270	680	360	630	300	460	400 410	12-ø23 12-ø28	24.5	370	4	F14	25	100	140	175	4-ø18	8x7	280	26.5